

Shavings No 52- May 2019

by Peter Lyons

On 11th May, Seamus Cassidy made a return visit to the Wood Shed. Always popular, Seamus' gave us a few demos, well up to his usual standard. He started by telling us that he is very busy, also that



most of the work he now does comes in by email with drawings of what his customers need supplied. He said that he had not done anything for himself for some time.

Seamus started by making a vessel from wet timber with the pith left in but drilled out and sown self made splits. Seamus cut



the blank from a log using a band saw, taking the blank from the centre of the log. This meant that the pith of the centre of the tree was still there. Seamus marked the position of the pith on each side up to the top surface and marked the line on the top



surface. He mounted the blank in a screw chuck and faced the end off. He used a bradawl to find the centre then he made a chucking point on that end. He also

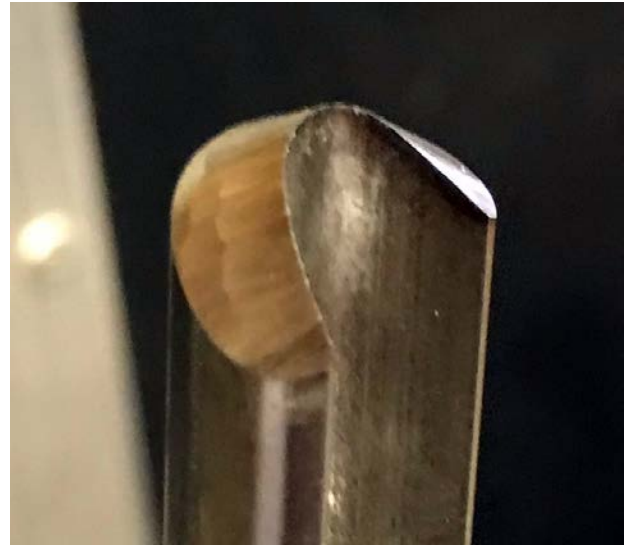


shaped the outside of the piece to a taper. When he had taken the shape as far as he could without making it too narrow behind the chucking point he mounted it in the chuck.

Seamus was having considerable trouble keeping an edge on his bowl gouge. There was silica in the wood that was making it blunt very quickly indeed. He sharpened at



used accelerator on the superglue. He then took the centre out of the piece, using his bowl gouge. Seamus' bowl gouges are

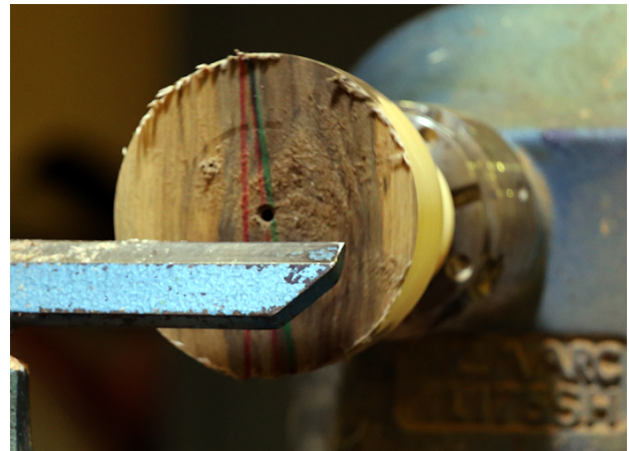


least 4 times when doing the outside and even more when doing the inside. Seamus mounted the shaped piece in the chuck and started on the outside. When he had the outside shape finalised he drilled the pith of the log out on both sides, using an

specially shaped by himself, one side has a long grind and the other a short grind. The angle on the top of the grind is very flat.



8mm bit. Super glue was used in the hole to stabilise the area around the pith. He



He finished the bowl to about 3 to 4mm and sanded with a pad. On the outside of



the vessel he used a hard block to hold the sandpaper, in the inside he used a plastic or hard rubber former to support the sandpaper. He explained if you use your finger it was possible to get an injury. The type of plastic or rubber is the type used for mats that you use to stand on if you are standing for a long time.

Once he had finished the hollowing he made the saw cuts from the edge of the

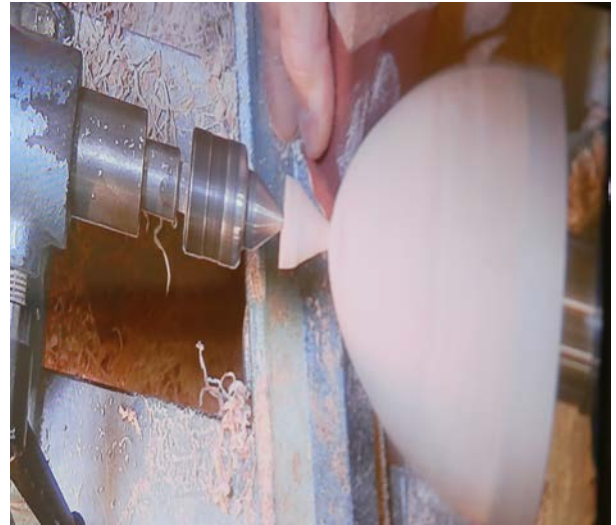


bowl to the hole he made when drilling out the pith. Explained that the wet wood was moving already to a different shape so before he reversed the piece to do the bottom he used a bit of gaffer type tape to support the edges of the cuts.

He mounted a rounded piece of wood in a chuck and reversed the bowl onto it with a



piece of packing between it and the bowl to prevent damage. He used the tail stock to centre the piece on the lathe. Seamus



put a piece of masking tape onto the tool rest to mark the inside of the vessel. He then finished the outside of the piece. Being very careful when he was taking off the last piece. The piece was a conical shape.

He then used a drill, sized to suit the lacing he was using, to form the lace holes on each side of each saw cut. He protected the piece by using masking tape on each side of the wood being drilled through. He then removed the tape and laced up the piece. He tied off the lacing and said it would take 2 weeks before the piece was



dry enough to finish. He used danish oil to finish the piece.

The next thing that Seamus made was a little square coaster that he was selling to



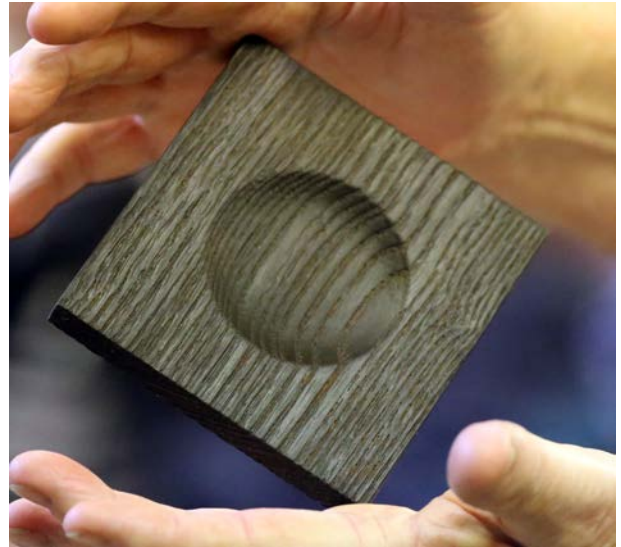
a jeweller so they could put some silver work in for sale. He used hot melt glue to centre a piece of 100mm x 5mm Ash onto a wooden back plate that was held to the lathe in a chuck. He faced off the wood and then made a shallow impression in the



face of it. He sanded it up. He removed it from the faceplate, pressing the coaster off the backplate and then rubbing the glue off the surface.

Using great care, Seamus used a blow torch to carbonise the edges of the coaster and the top. He set the coaster on the

edge of a block of wood, a brick might be a safer option. He then rubbed the charred



parts of the coaster edges and top with a stiff bristled brush. Once this was done a clear wax gave a wonderful finished surface. You could adapt the project to make coasters for glasses or wine bottles.

Seamus was not finished yet. He went on to show us a different way to make a spoon with a longish handle. This was one he had prepared earlier by making a long



handle shape with a ball on the end. He then cut the turning in half lengthwise. He used a holding jig on the bandsaw that was a 90deg section with a slot cut on the bandsaw that enabled him to cut the round section of the spoon along it's length.



He used this preprepared turning for the rest of the demo. He had made a wooden faceplate that mounted in the lathe with a chuck. He had made a depression in the centre of the faceplate that let the back of the spoon go below the surface of the faceplate. He brought up the tailstock with nothing in it and used that to hold the spoon onto the faceplate. Using the tailstock in this way ensured the spoon



was absolutely square to the line of the lather bed. He then used hot melt glue to secure the spoon to the faceplate. He put some protective material around the handle so that it could be seen when turning was going on. He then removed the tailstock and took the centre out of the spoon. He finished with a sanding.

He took the spoon from the faceplate by forcing the hot melt glue off. A bit of cleaning up and finish with what ever you



want if anything and we had our 3rd demo in a very good day.



RBHSC



I will remind you members that Jenne McDonald from the RBHSC will attend our Seminar day next month to pick up the

pieces for the children. Please bring as many pieces as you can for this good cause. We have been supporting this for some considerable number of years now, we need to keep up the good work.

The Shanes Castle Game Fair

We got word this week that the Shanes Castle Game Fair is going ahead. We had previously been informed that it was going South. It is, but they are now doing one at Shanes Castle

Ireland's Largest Game Fair & Premier Country Sports Event

The Irish Game Fair & Fine Food Festival
WHERE TOWN & COUNTRY MEET

Shanes Castle, Antrim
Saturday 29th & Sunday 30th June 2019

The Irish Game Fair & Fine Food Festival celebrates its 41st anniversary as the event of choice for those who enjoy the Irish Countryside and the Country Lifestyle. Families can enjoy:

- An action packed Game Fair programme of international country sports competitions and displays with lots of 'have a go' activities and fantastic prizes
- The International Year of the Salmon fishing attractions
- A huge Living History Village with Encampment & Displays including Medieval Jousting
- A superb Fine Food & Craft Festival including game & fish cookery demos
- Stylish country living displays including clothing, homes, gardens and cars
- Lots of entertainment & educational activities for children
- With our new Irish Country Lifestyle Festival, Galway Racecourse, Ballybet (15 & 16 June) The perfect platforms for businesses with country lifestyle products or services

Keep up to date with Fair news on www.irishgamefair.com or in the Irish Countrysports & Country Life magazine www.countrysportsandcountrylife.com

The Fair is supported by

E: irishgamefair@btinternet.com

For info: call 028 44839167

Brendan has been on the ball and has almost finalised our stand. It will be similar to what we did last year, so if you can get involved, please contact Brendan.
brendan.mcareavy@googlemail.com

Competition Results For May

Cat 1, Kitchenalia.

1st Francie McHugh

A rolling pin with adjustable thickness settings



2nd Gerry Leddy

A honey dipper



Cat 2, A scoop

1st Dermot Doherty scoop.



2nd Jim Neill Scoop



I hope this Shavings does the job, Brendan's unavoidable absence at the demo means there is not as much detail in this one, but I think it does what we need.

Thanks
Peter

3rd Paul Finlay scoop



Ulster Chapter Seminar

Phil Irons has confirmed his attendance on June 8th. We will have a full day of demonstrations starting at 0930. Sam will be doing the usual marquee erecting on Friday 7th, so if you can help please show up at the Wood Shed after 1300.

There will be a two course meal with tea or coffee after in the marquee starting at 1300 on the Saturday. Demos are 0930 to 1100, 1130 to 1300. 1400 to 1500 and 1545 to 1700 approx.

The cost for all this enjoyment is £30 per head, payable on the day, or before if you want, give your money to Paul. If you do wish to go please let us know. brendan.mcareavy@googlemail.com

We should have a good day, Phil Irons is a great demonstrator.